

# TEKNİK ÇİZİM KATALOĐU



## SYSTEM KARASU

*Profesyonel Çözüm Ortađımız*

## BİLGİ/INFORMATION

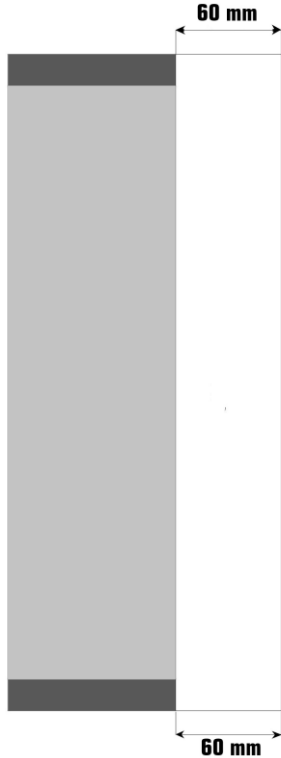
- Tüm kapakları senkronize olarak çalışan sürgülü gardrop sistemleridir.
- Yarı yüzden basan sistemlerdir.
- Kapakların yerinden çıkmasını engelleyen kilit sistemi bulunmaktadır.
- Her kapak için taşıma kapasitesi 90 kg'dır.
- 4 kapaklı senkronize sisteminde 2 iç kapak - 2 dış kapak şeklinde uygulama yapılabilir.
- Senkronize kapaklar ile kullanım kolaylığı sağlamaktadır.

- *These are sliding wardrobe systems that all of its doors work synchronously.*
- *These are the systems that press half a face (roller systems).*
- *There is a lock system that prevents the doors from coming off.*
- *Carrying capacity for each door is 90 kg.*
- *In the 4-door synchronous system, 2 inner doors - 2 outer doors can be applied.*
- *It provides ease of use with synchronized covers.*

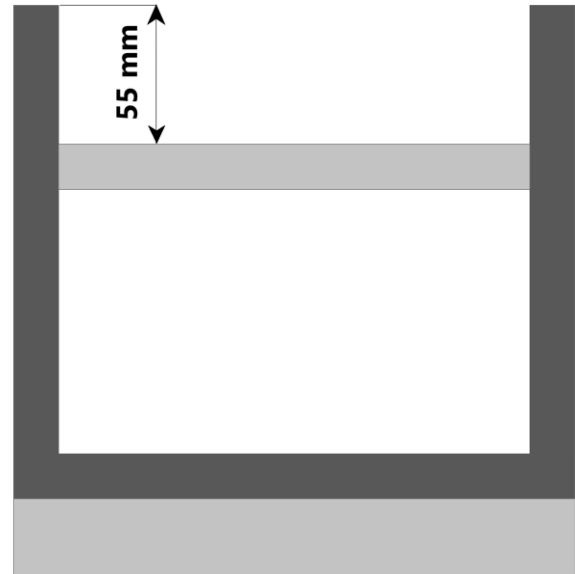
## ÜST RAY TAKIMI / TOP RAIL KIT

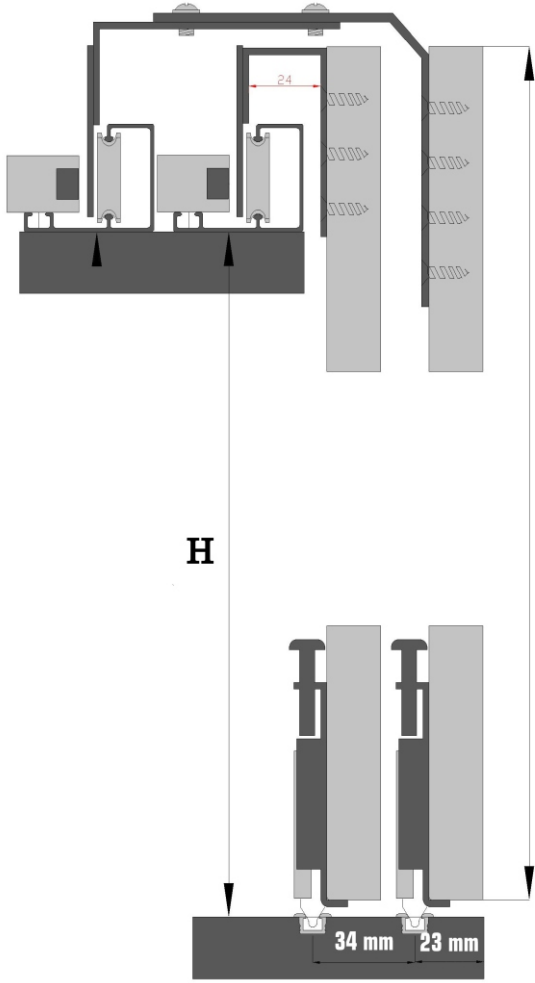


## ÜST GÖRÜNÜM / TOP VIEW

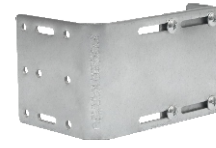


## ÖN GÖRÜNÜM / FRONT VIEW



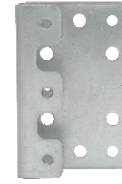


DIŞ KAPAK MEKANİZMA / OUTER DOOR MECHANISM



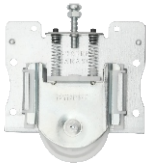
SYS 5001

İÇ KAPAK MEKANİZMA / INNER DOOR MECHANISM

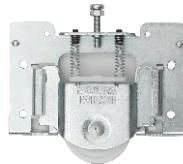


SYS 5011

ALT MAKARALAR / BOTTOM REELS



SYS 1040

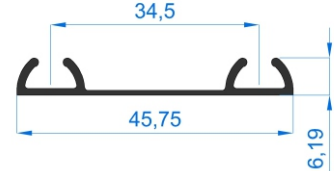


SYS 1050

ALT RAYLAR/ BOTTOM RAILS



ALT RAY 0050



ALT RAY 0090