

TEKNİK ÇİZİM KATALOĐU



SYSTEM KARASU

Profesyonel Çözüm Ortađınız

SKS 2120

BİLGİ/INFORMATION

- Bazalar arası çalışan ve yüzden basan sistemlerde uygulanabilen aparat mekanizmalarıdır.
- Mekanizmalar sabitlenerek kapakların yerinden çıkmasını engellenir.
- Her kapak için taşıma kapasitesi 90 kg'dır.
- 4 kapaklı bu sistemde 2 iç - 2 dış kapak şeklinde uygulama yapılabilir.

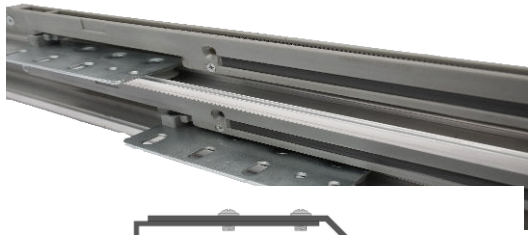
-These are apparatus mechanisms that can be applied in systems working between bases and pressing from face.

-The carrying capacity for each door is 100 kg.

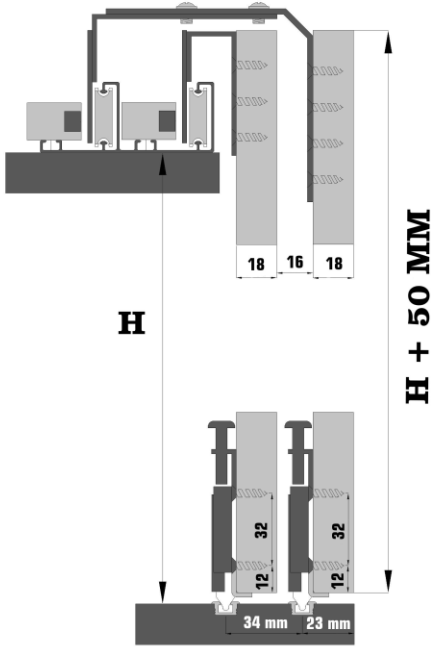
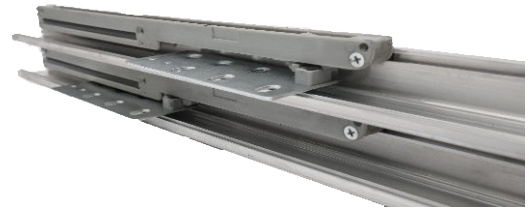
- Mechanisms are fixed and the doors are prevented from coming off.

- In this 4-door system, optional 2 inner 2 outer covers can be applied.

TAKIM İÇERİĞİ / TEAM CONTENT



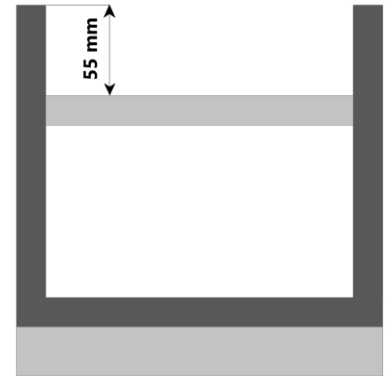
ÜST RAY TAKIMI / TOP RAIL KIT



ÜST GÖRÜNÜM / TOP VIEW



ÖN GÖRÜNÜM / FRONT VIEW



ALT MAKARALAR / BOTTOM REELS



SYS 1050

DIŞ KAPAK MEKANİZMA / OUTER DOOR MECHANISM



SYS 5000

ALT RAYLAR/ BOTTOM RAILS



ALT RAY 0050

İÇ KAPAK MEKANİZMA / INNER DOOR MECHANISM



SYS 5010

STOP VE YAVAŞLATICILAR / SOFT CLOSERS



STP 04

STP 03